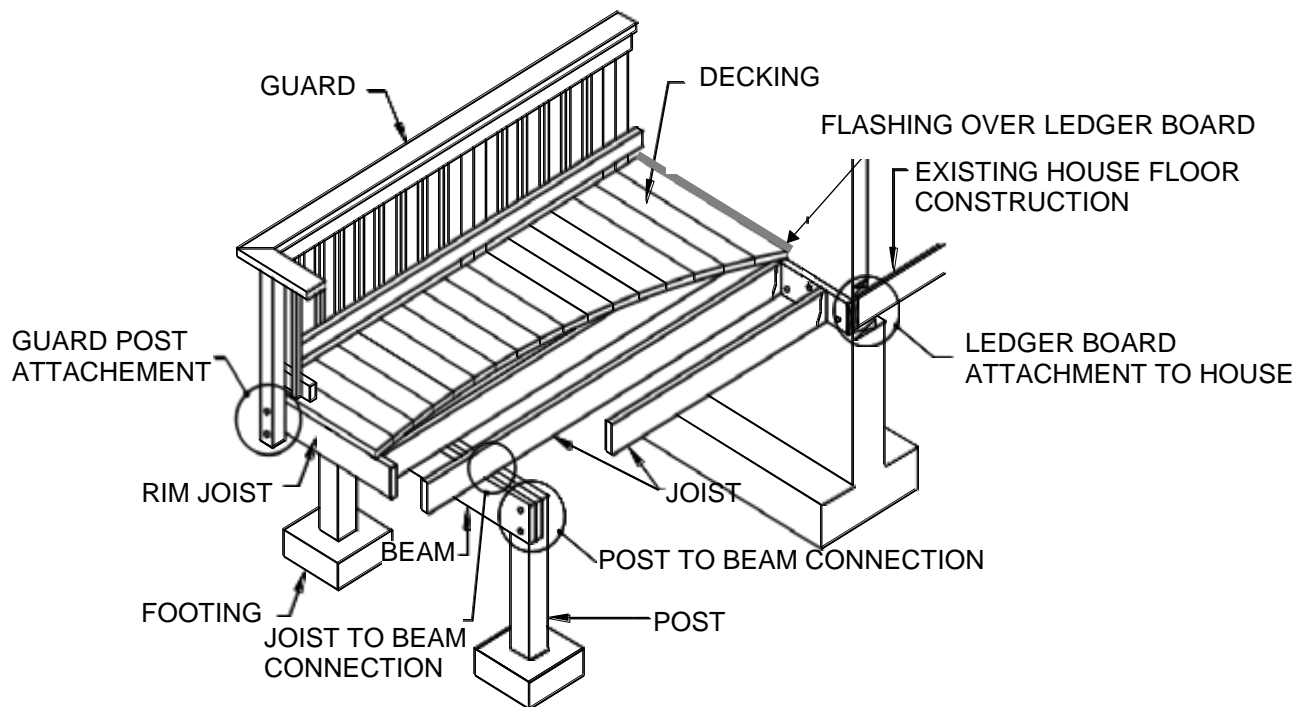


STANDARD RESIDENTIAL DECK DETAILS

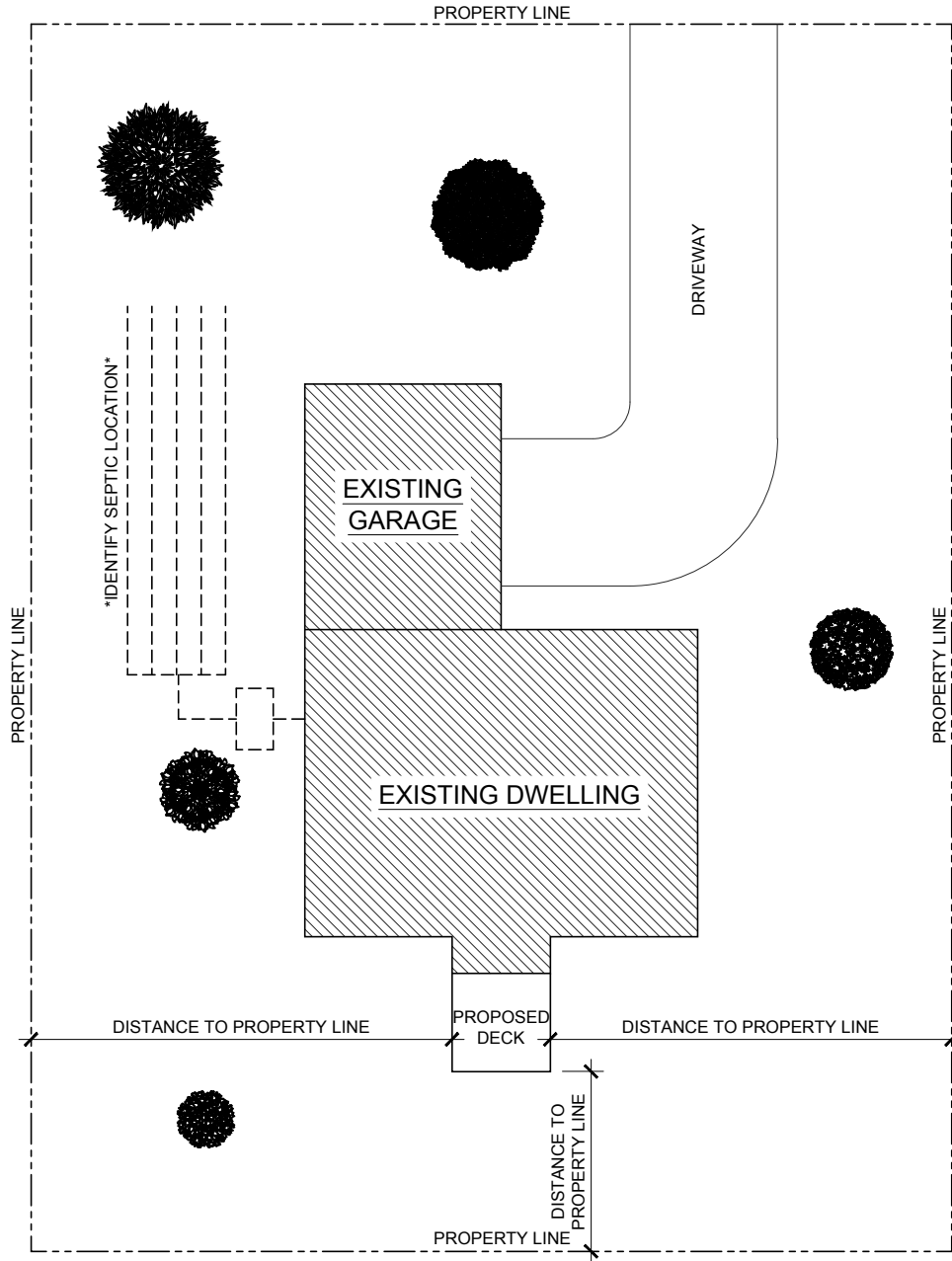


This document may be used in lieu of submitting construction drawings provided:

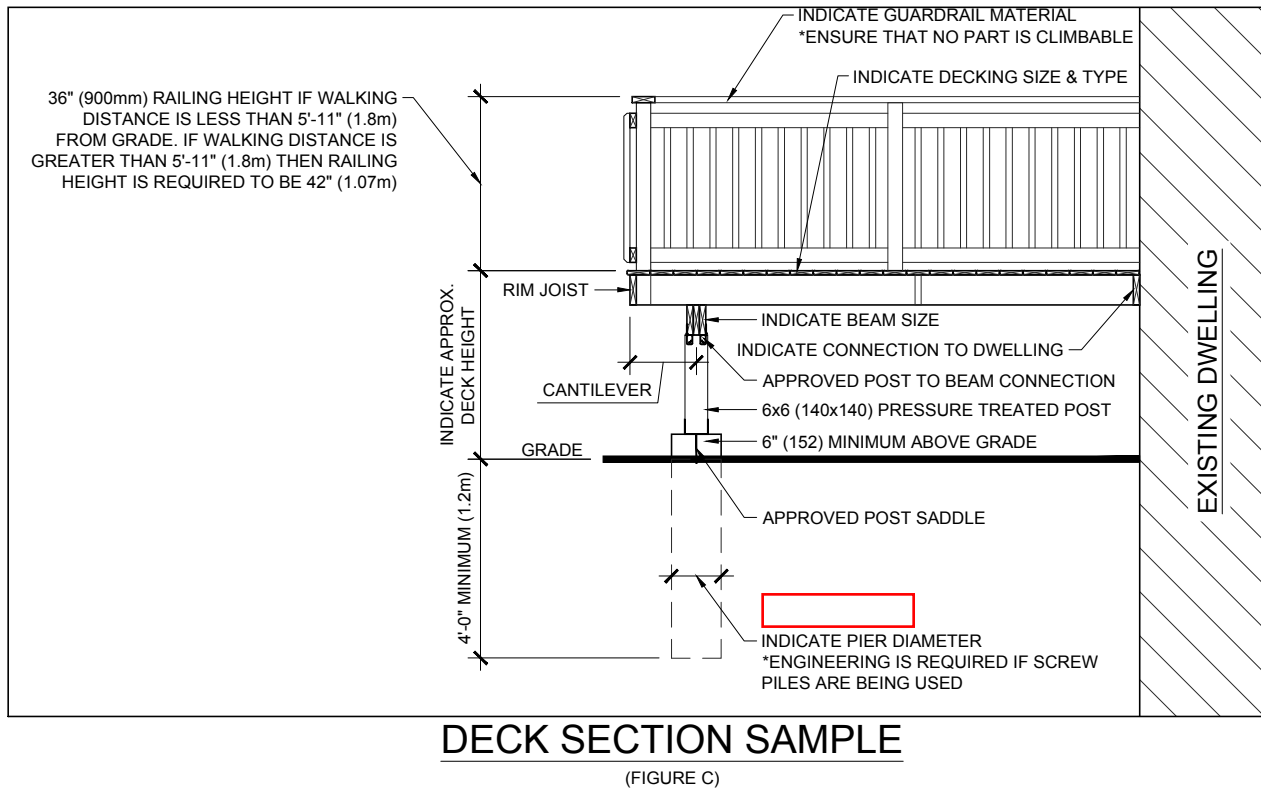
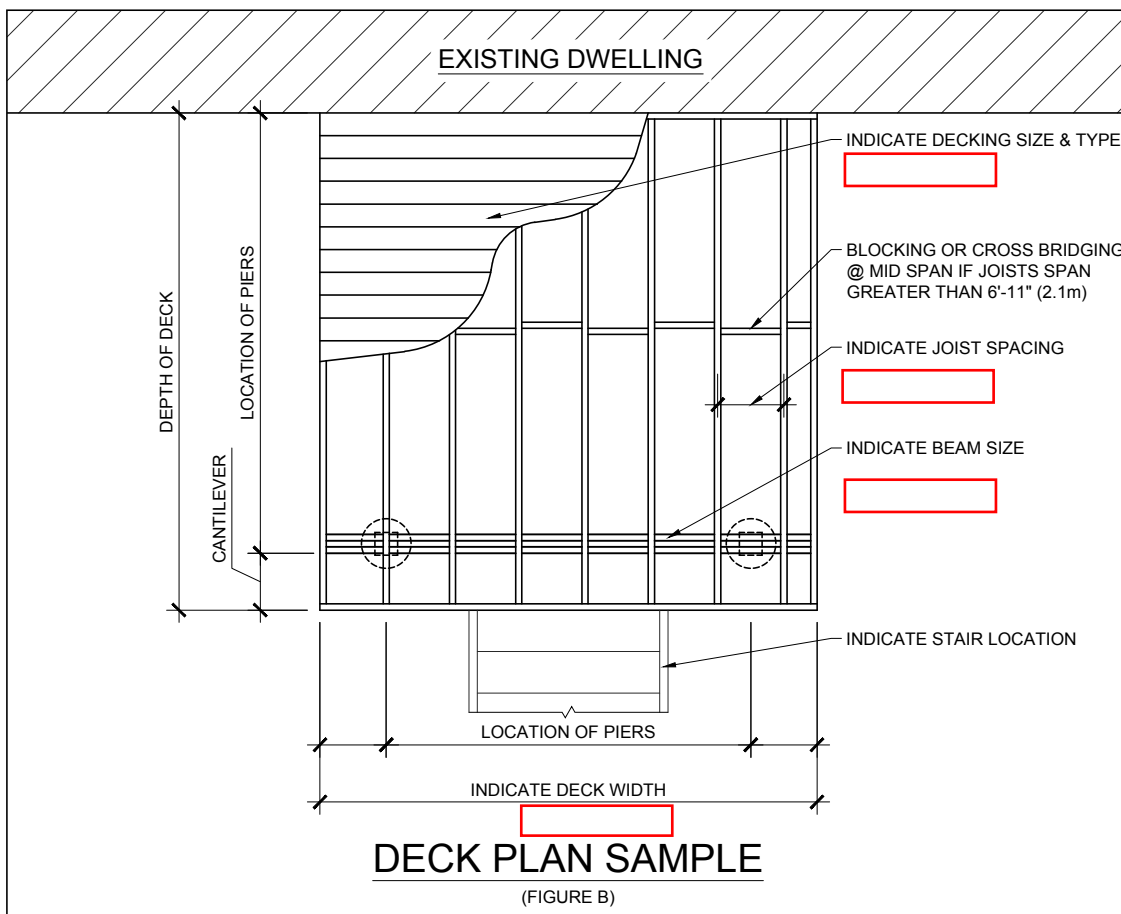
- ✓ **The proposed deck is for residential use only and is UNENCLOSED (No roof);**
- ✓ **No hot tubs, gazebos, or other roof structures are installed; and**
- ✓ **The deck construction conforms to these details.**

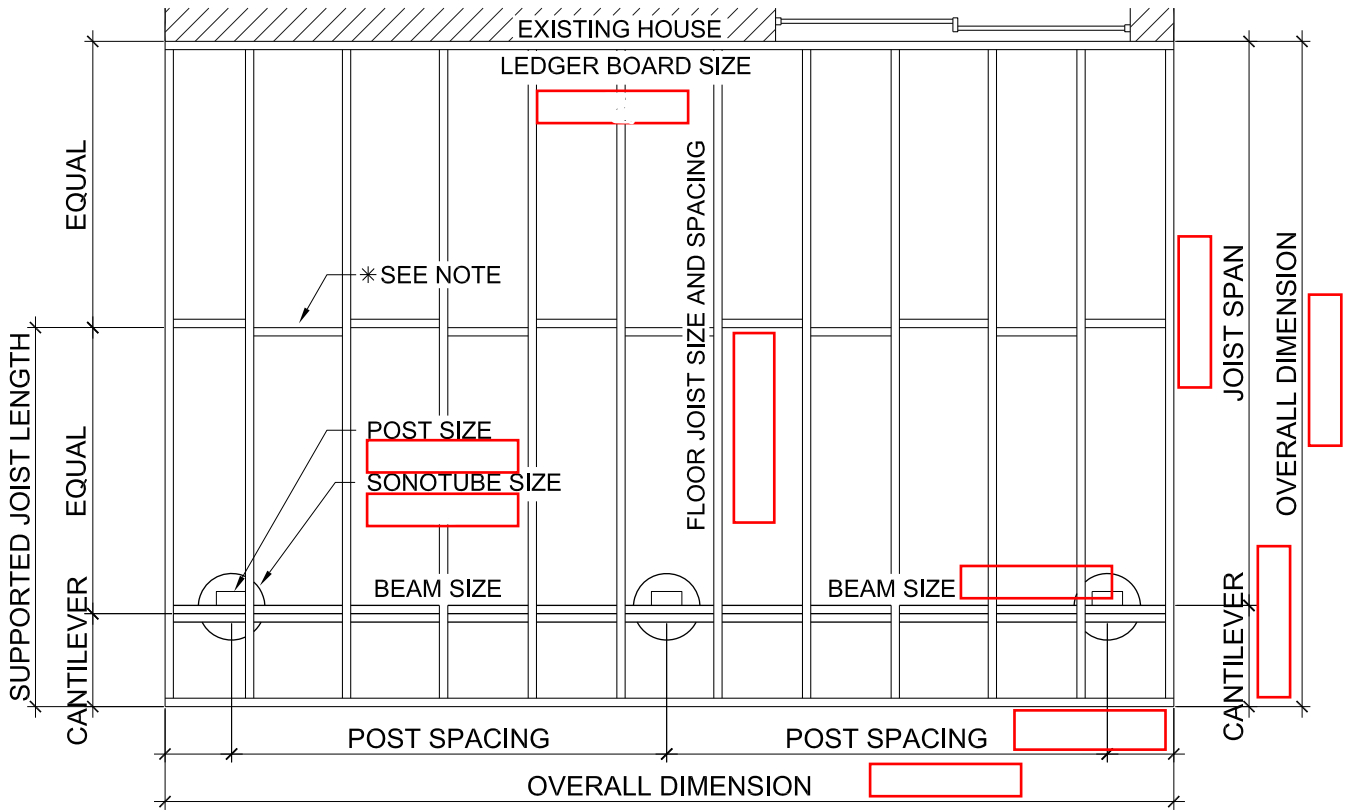
The information contained in this document is for references only. It is intended to assist homeowners with their deck project while ensuring compliance with the requirements of the Ontario Building Code. The drawings and details specified are typical construction details and other methods may be permitted either upon authorization from the Chief Building Official or by having the drawings sealed by a Professional Engineer or accompany a designer sheet signed for the category of Building Structural. All construction shall be inspected including footings (prior to placing concrete), framing and a final inspection prior to use.

All construction shall conform to the 2024 Ontario Building Code, as amended.



SAMPLE SITE PLAN
(FIGURE A)





Deck Layout

**All decking is to be 5/4 x 6 wood material or approved equal

Table 1: Minimum Pier Sizes (Diameter in inches)

Joist Span	Pier Spacing				
	6'-0"	8'-0"	10'-0"	12'-0"	14'-0"
6'-0"	8"	8"	10"	10"	-
8'-0"	8"	10"	10"	12"	-
10'-0"	10"	10"	12"	12"	-
12'-0"	10"	12"	12"	-	-
14'-0"	12"	12"	-	-	-

Shaded Areas require a Minimum 28" x 28" footing or "Big Foot" Footing System

Maximum 2-Ply Beam Length			
Supported Joist Length	2 x 8	2 x 10	2 x 12
4'-0"	11'-7"	14'-10"	17'-4"
6'-0"	9'-10"	12'-1"	14'-0"
8'-0"	8'-7"	10'-6"	12'-3"
10'-0"	7'-8"	9'-4"	10'-8"
Maximum 3-Ply Beam Length			
8'-0"	10'-8"	13'-0"	15'-1"
10'-0"	9'-6"	11'-8"	13'-6"

Maximum Floor Joist Length		
Joist Size	Max. Span	Max. Cantilever
2x8 @ 12" O.C.	12'-6"	20"
2x8 @ 16" O.C.	11'-9"	16"
2x8 @ 24" O.C.	11'-0"	14"
2x10 @ 12" O.C.	14'-6"	28"
2x10 @ 16" O.C.	13'-8"	24"
2x10 @ 24" O.C.	12'-10"	20"
2x12 @ 12" O.C.	16'-5"	28"
2x12 @ 16" O.C.	15'-6"	24"
2x12 @ 24" O.C.	14'-6"	20"

DECK ELEVATION PLAN AND DECK LATERAL SUPPORT (Where post height exceeds 2'-0")

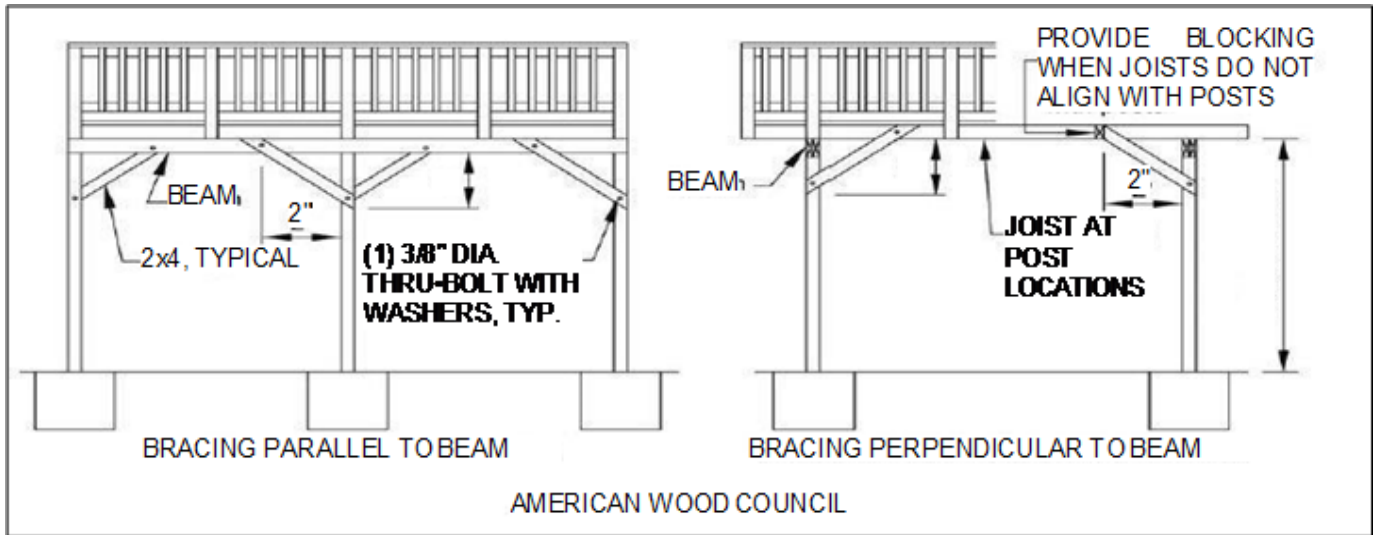
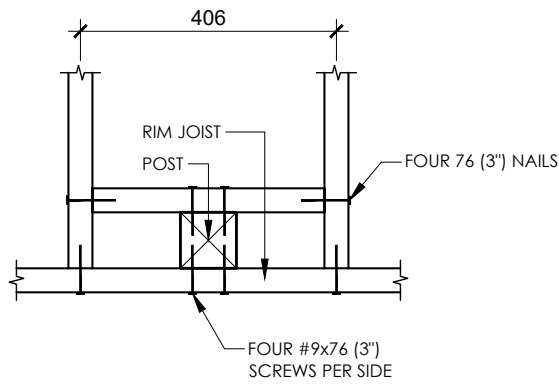


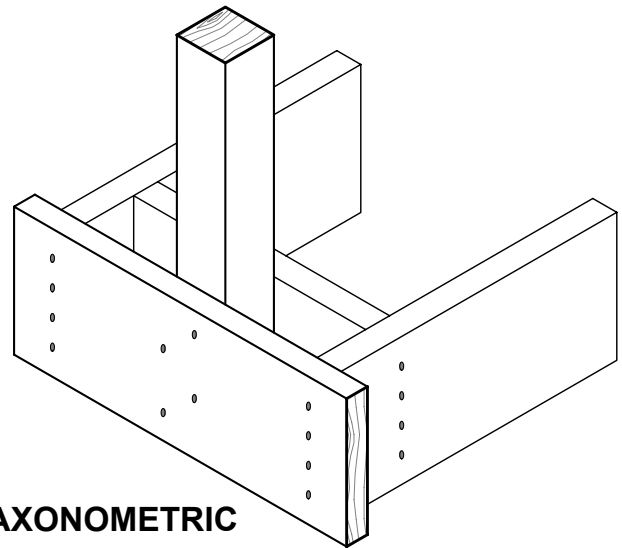
Table 4: Deck Ledger to House Connections: Lag Bolt Spacing (See Diagrams)

LAG BOLT SIZE	JOIST SPAN			
	Up to 6'-0"	8'-0"	10'-0"	12'-0"
1/2" (12.7mm)	32" o/c	16" o/c	16" o/c	12" o/c
Equivalent 16" o/c Joist Spacing	Every Other Joist Space	Every Joist Space	Every Joist Space	Each Joist Space with Two Every Other Space
3/8" (9.5mm)	24" o/c	12" o/c	12" o/c	8" o/c
Equivalent 16" o/c Joist Spacing	Two Every Third Joist Space	Each Joist Space with Two Every Other Space	Each Joist Space with Two Every Other Space	Two Each Joist Space Three Every Other Space

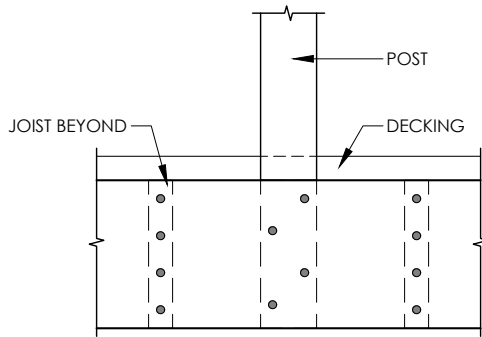
DETAIL EB-1 of SB-7 GUIDE
EXTERIOR CONNECTION: POST NAILED TO RIM JOIST



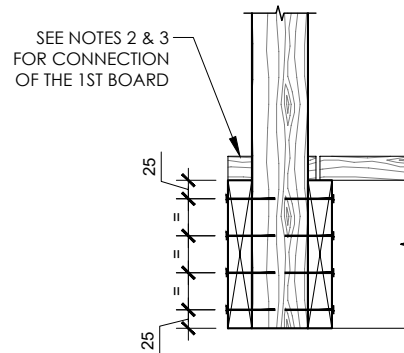
PLAN VIEW



AXONOMETRIC



FRONT ELEVATION



SECTION

NOTES:

1. DECKING IS OMITTED FROM THE PLAN VIEW AND AXONOMETRIC VIEW FOR CLARITY.
2. FASTEN 25x140 (5/4"x6") OUTER DECK BOARD TO RIM JOIST WITH 63 (2 1/2") NAILS @ 300 (12").
3. FASTEN 25x140 (5/4"x6") OUTER DECK BOARD TO FLOOR JOIST WITH ONE 63 (2 1/2") NAIL AT EACH JOIST.
4. THE POST MAY BE POSITIONED ANYWHERE BETWEEN JOISTS.
5. DIMENSIONS ARE IN mm UNLESS OTHERWISE SPECIFIED.

MAXIMUM SPAN OF RAIL BETWEEN POSTS	
SPECIES	MAXIMUM SPAN, m (ft - in)
DOUGLAS FIR-LARCH, HEM-FIR, SPRUCE PINE FIR	1.22 (4'-0")
NORTHERN SPECIES	1.20 (3'-11")

TITLE:

WOOD DECK

PLANS, CONNECTION DETAILS & SPECIFICATIONS

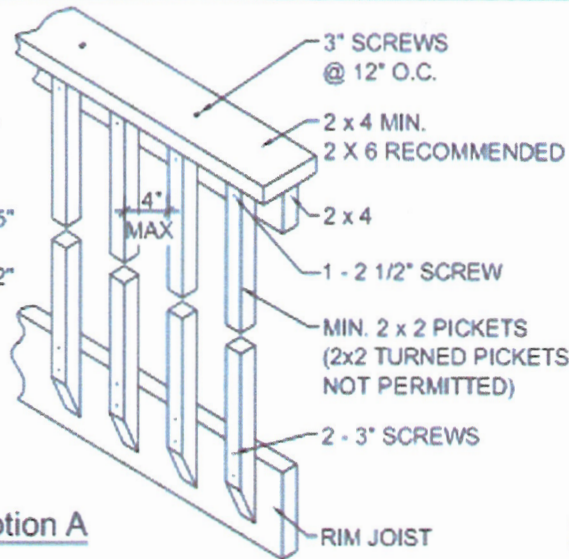
Building Services

Deck Details

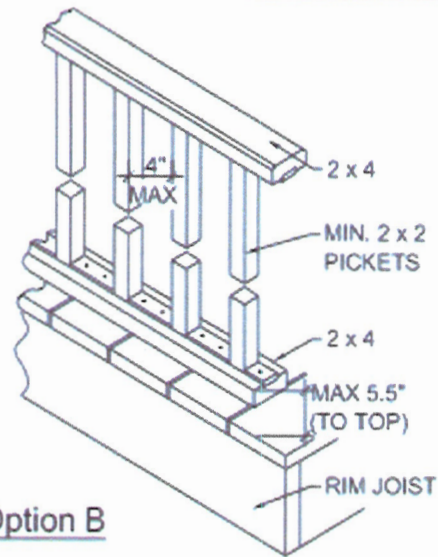
Guard, Post, Beam, Footing and Ledger Board

SCALE:
NOT TO SCALE

MIN. GUARD HEIGHT WITH DECKS:
- 5'-11" OR LESS ABOVE GROUND = 35"
- MORE THAN 5'-11" ABOVE GROUND = 42"



Option A

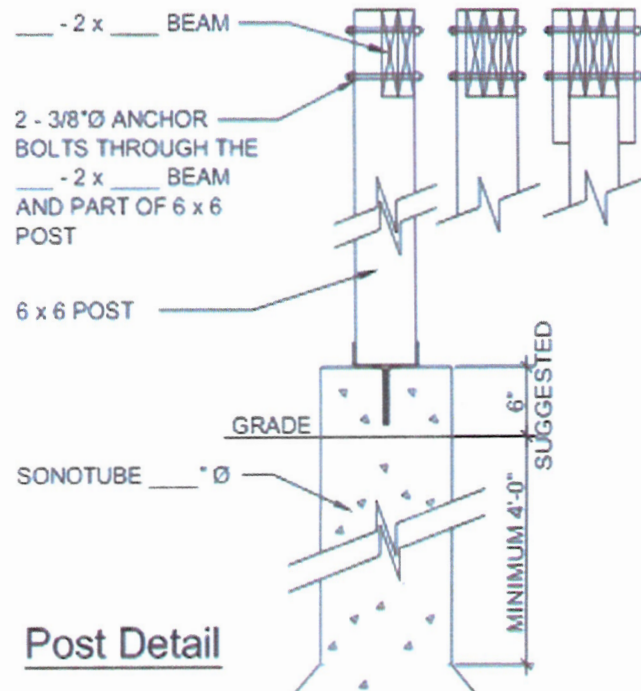


Option B

NOTE: ANYTHING OTHER THAN A WOOD GUARD/RAILING, PLEASE SUBMIT A COPY OF THE PRE-ENGINEERED GAURD/RAILING DETAILS WITH YOUR BUILDING APPLICATION.

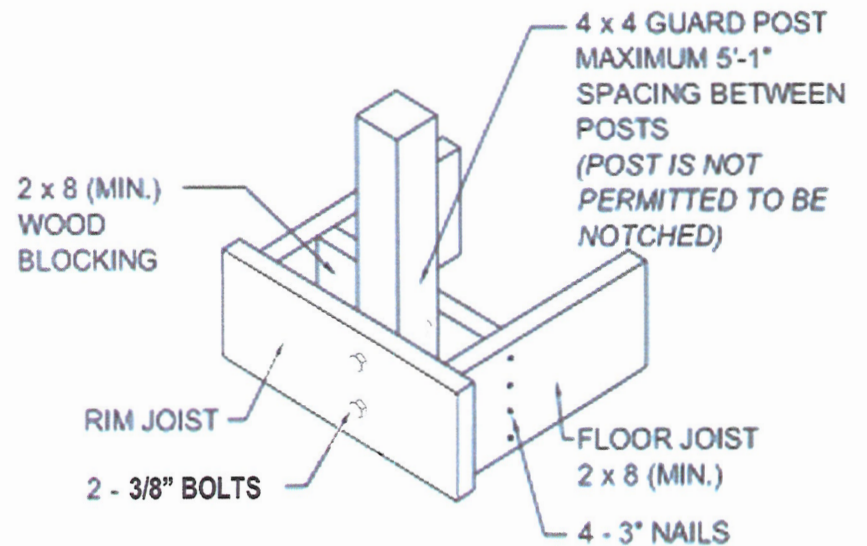
Guard Details

OR REFER TO SB7



Post Detail

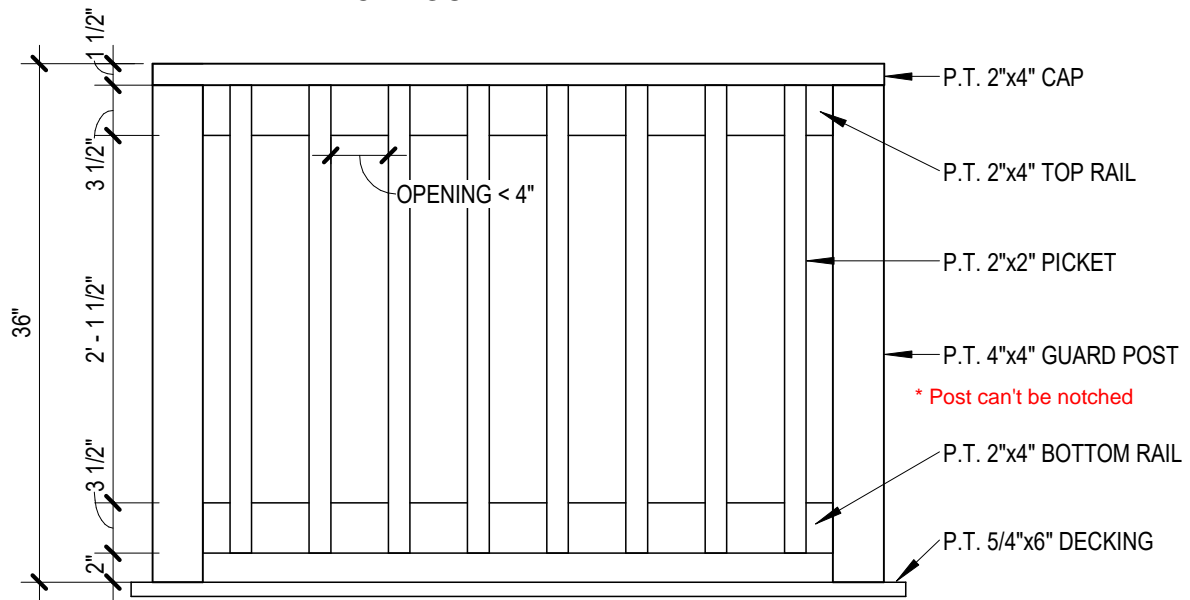
**ADDITIONAL LATERAL BRACING MAY BE REQUIRED. CONFIRM WITH BUILDING INSPECTOR @ FRAMING INSPECTION.



Guard Post Detail

42" inches required if over 5' 11"

TYPICAL GUARD DETAIL



STAIR SECTION

